

## Installation and Maintenance Guide Eco-Tuf Laminate Flooring With 4-Sided Unilin Click

### Read completely before starting installation

All installed boards will be considered as accepted by the installer and/or homeowner. Any defects should be reported to the wholesaler or retailer immediately for inspection and/or replacement. We cannot accept responsibility for flooring installed with visible defects.

### General precautions

Embelton Eco-Tuf Laminate flooring products are inspected for quality before packaging and shipping. Nevertheless, a final jobsite inspection of your flooring should be performed for grade, colour, finish and quality. Ensure adequate lighting for proper inspection. Room temperature and humidity of the installation area should be consistent with normal, year-round living conditions for at least a week before installation. Room temperature of 15°-30°C and a humidity range of 30-70% is recommended. It is most important that you install the flooring once you open the cartons, without waiting for several hours or days. Do not store directly on concrete or near outside walls.

### General installation notes

ALL LAMINATE FLOORS REACT TO HUMIDITY AND MOISTURE. It is the responsibility of the installer and the owner to install an effective moisture barrier and to maintain correct moisture and humidity percentages.

- The humidity of a room can vary due to many factors – the change of seasons for example. The floor must be able to expand and contract in all directions.
- When possible, pre-select and set aside boards that blend best with all floor beadings, skirting boards or mounted mouldings used to assure a uniform final appearance. Install these boards adjoining the mouldings.
- Be attentive to staggering the ends of boards in adjacent rows. They should be staggered at mid point when the boards are of equal length. When installing boards of random length, ensure that the staggered length is at least 10-15 cm. This will help ensure a more favourable overall appearance of the floor.
- Any installation requiring the flooring to exceed 8 metres in width or length will require an expansion or T-moulding. All doorways and adjoining rooms should have expansion joints.
- Always allow a minimum 10-12 mm expansion around all vertical obstructions.

### Subfloor heating

EMBELTON ECO-TUF LAMINATE IS NOT SUITABLE FOR FLOORS WITH UNDERFLOOR HEATING.

### Subfloor preparation

#### CONCRETE

- 1) Ensure that your subfloor is clean, flat, smooth and level. Height differences of more than 3 mm +/- over 1 metre must be levelled. Correct any changes in height difference and ensure that the levelling compound has cured prior to starting your installation.
- 2) Lay Embelton Combo Foam Underlay, taping all edges together using wide adhesive tape.

#### WOOD AND OTHER SURFACES

- 1) Ensure that your subfloor is clean, flat, smooth and level. Height differences of more than 3 mm +/- over 1 meter must be levelled. Correct any changes in height difference and ensure that the levelling compound has cured prior to starting your installation.
- 2) Lay Embelton Combo Foam Underlay (or another approved underlay) taping the edges together using the wide adhesive tape, but do not overlap the edges.

### Preparing to install

- 1) Clean and sweep.
- 2) Let the opened packages of flooring lie flat on the floor in the room in which the floor is to be installed.
- 3) Check door and door frame clearances to ensure that doors will move freely without contacting the laminate surface.
- 4) Although an Embelton laminate floor can be installed in any direction, as a rule, laminate floors are usually installed perpendicular to a window. Installing the floor parallel to the longest wall tends to make a room appear larger. You will get better results by laying two or three rows of laminate floor in advance to get an eye pleasing distribution of the plank.

## Installation and Maintenance Guide Eco-Tuf Laminate Flooring With 4-Sided Unilin Click

### Installation

- 1) Measure the room carefully to determine if it is square, and to calculate the width of the last row. For planks less than 50 mm in width, re-cutting the first row will be necessary to ensure stability (do not include the tongue of a plank in your measurements, as all exposed tongues must be removed from the perimeter of the floor – i.e. the first row of planks). Should you have an irregular wall for the first row, the plank must be cut to follow the wall's irregularities.
- 2) When preparing to saw a plank (use safety glasses), always ensure that the decorative surface of the plank is facing down.
- 3) Starting in one corner of the room, the flooring should be installed from left to right, with the tongue sides facing the walls. Place spacers between the plank and the wall (spacers provide the necessary space required for expansion around the perimeter of the floor). It is especially important to leave at least 10-12 mm free around the entire floor. To ensure stability, the planks at the end of each row must not be shorter than 300 mm. If your last plank is shorter than 300 mm, it is advised to re-cut the first plank in the row. The remainder of the plank from your first row can be used as the first plank of the next row. Stagger the planks by cutting the first plank of every other row in half. The pattern will then be repeated until the opposite wall is reached.
- 4) When laying the planks for the first row, place the first plank flat and against the spacers. The next plank being laid must be elevated at a slight angle to allow the "click" to slip into the groove of the first plank. Once flat, push and gently tap the planks together using a rubber mallet until they click in tight.
- 5) For the second and consecutive rows, elevate the plank on the long side at a slight angle to allow the "click" to slip into the groove. The next plank should be laid the same way, this time with the "click" on the left side of the plank falling just next to the previous plank. Once flat, you can tap the planks together until they click in tight.
- 6) When you reach the final row, place a loose panel precisely on the last laid panel. Place another panel on top, but with its edge 10-12 mm from the wall. Trace a cutting line along the middle panel and saw it along that line.
- 7) Lay the panel you cut and ease it into position. Insert spacers between the wall and the last panel laid to be sure there is a 10-12 mm expansion gap.
- 8) To pass obstacles through the floor (pipes, radiator mounts), use a pencil to trace the position for drilling. Find the centre and then drill, using a big enough bit to leave 10-12 mm peripheral play. Cut the strip in two (saw through the centre of the drilled hole), allowing the strip to be re-assembled around the pipe. If the obstacle is on the long side of a strip, cut it in a trapezoid shape, otherwise a straight cut would be best.
- 9) When going from one room to the other, make sure to separate the rooms with a transition moulding. The floor is ready for use as soon as it is laid.

### Finishing

- 1) Remove the spacers.
- 2) Cover the expansion joints around the perimeter of the floor with baseboard mouldings and/or quarter rounds. If a vapour barrier was used, do not forget to fold the polyethylene film along the edge of the walls under the baseboards and/or quarter rounds. Fit these products to the walls without attaching them to the floor.
- 3) Install the T-mouldings to hide the expansion gaps where needed (doorways, more than 8 metres, etc.).
- 4) Any remaining boards can be kept for several years, stored flat in a moisture-free area. Furniture can be put back in position right away.

### Maintenance

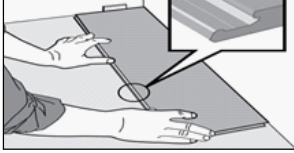
Your laminate floor is designed with low maintenance in mind. Follow these steps to achieve many years of enjoyment from your floor:

- Sweep or vacuum as often as necessary to remove any loose dirt or grit before it can scratch the floor.
- When a spill occurs, soak up the bulk liquid promptly.
- In areas of excessive traffic and wear, please make use of runners or area rugs.
- Use felt protectors under heavy pieces of furniture and chairs. Do not use rubber as it may leach into the floor.
- Use protective mats at all exterior entrances. Do not use rubber-based furniture or mats as the rubber may leach into the floor.
- Spiked heels or shoes in need of repair can severely damage your floor.
- Damp mop only – avoid excessive amounts of water. Steam mops must not be used.
- Never use oil soaps, wax, liquid or other household products to clean your floor.
- Keep animal nails trimmed.
- Protect your floor when using a dolly for moving furniture or appliances.
- Never slide or roll heavy furniture or appliances across the floor.
- Maintain relative humidity levels between 30% and 70%.

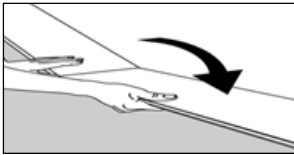
**Installation and Maintenance Guide**  
**Eco-Tuf Laminate Flooring With 4-Sided Unilin Click**

**Step-by-step installation**

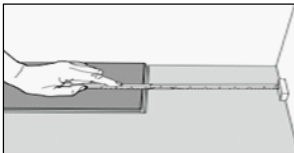
- 1) First plank, first row. Place a spacer 10-12 mm thickness to the left and position the plank against the wall. Later, after 3 rows, you can easily position the flooring against the front wall with spacers of 10-12 mm.



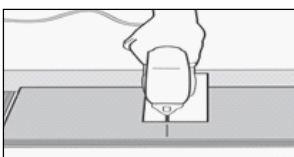
- 2) Second plank, first row. Press the short end of the next floorboard at an angle to the first one, then lay down. Complete the first row. The boards can also be tapped up without lifting.



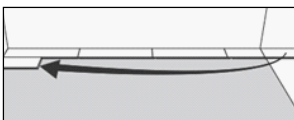
- 3) At the end of the first row, place a spacer 10-12 mm to the wall and cut the length of the last plank to fit.



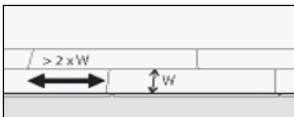
- 4) Cut with a saw – decor turned down.



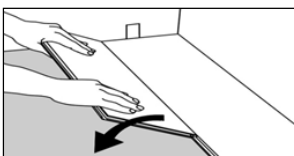
- 5) Second row, first plank. Minimum length 300 mm. Place a spacer against the wall.



- 6) General. Minimum distance between short ends of planks in parallel shall not be less than 200 mm.



- 7) Place the floorboard at an angle against the floorboard in the previous row, press forward and fold down at the same time. A rubber mallet and tapping block may be necessary.



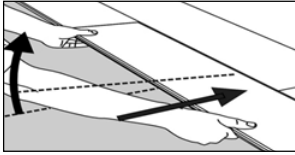
- 8) Second plank, second row. Place the short end of the floorboard at an angle against the previously installed floorboard. Fold down. The boards can also be tapped up without lifting.



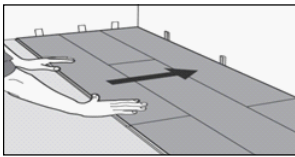
## Installation and Maintenance Guide Eco-Tuf Laminate Flooring With 4-Sided Unilin Click

### Step-by-step installation

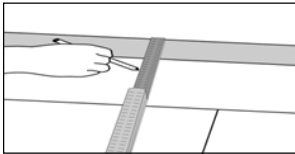
9) Lift floorboard (together with the previously installed floorboard in the same row) lightly up (about 30 mm) and push it against the row in front. Push down when the floorboards are positioned tightly together.



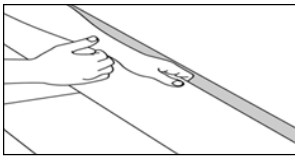
10) After 2-3 rows, adjust the distance to the front wall by placing spacers 10-12 mm.



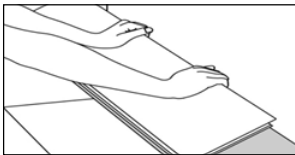
11) If the wall is uneven, the floorboards must be adapted to its contours. Mark the floorboards with the contour of the wall. Do not forget to leave a 10-12 mm space to the wall.



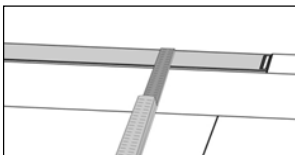
12) To remove the first row, lift the floorboard a few centimetres and tap along the joint. Cut the floorboards as required.



13) Reinstall the first row from left to right. Press the boards against the edges of the floorboards that are already in position, with the strip first.



14) Last row. Minimum width 30 mm. Remember, the space to the wall is 10-12 mm. Tip! Place a spacer before measuring. Cut the panels lengthwise and install.



### Disassembling

Your floor can easily be disassembled. This enables replacement during installation and also after made installation, when it is needed or desired to replace one or several planks, or even the whole floor. Release by angling up.