

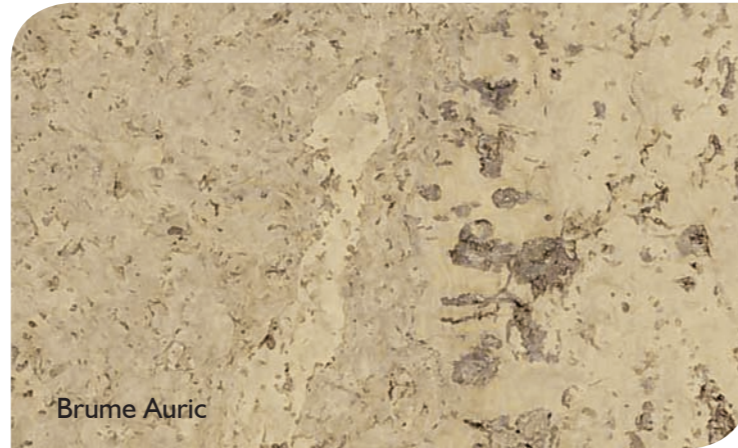
## EuroCork Colours

Please note the range may be reviewed over time to match changing trends and availability. For updates, please refer to our website.

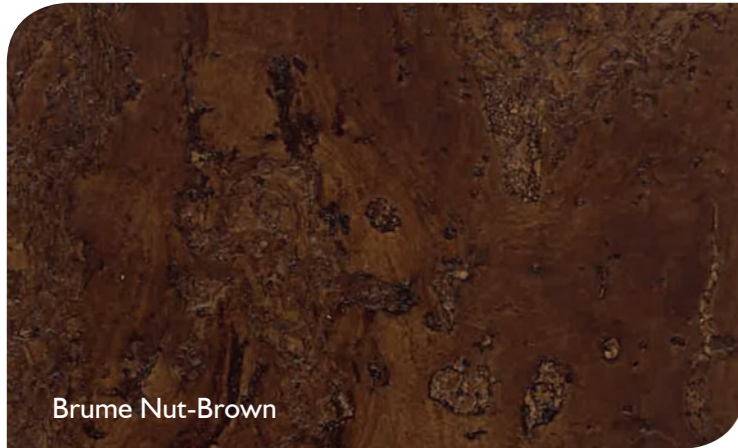
[www.embelton.com.au](http://www.embelton.com.au)



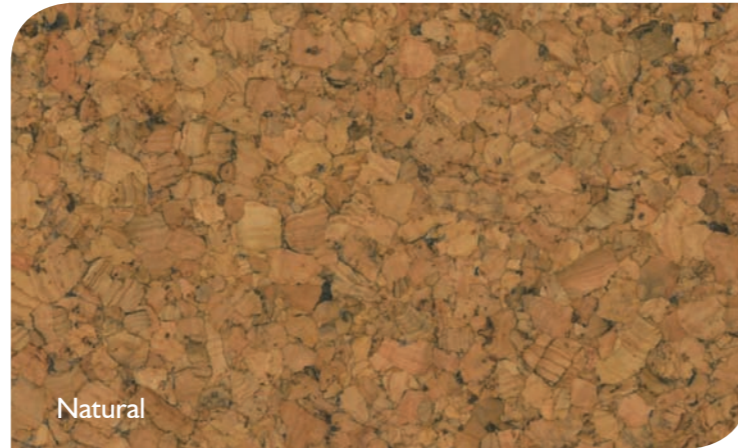
Brume Anise



Brume Auric



Brume Nut-Brown



Natural



Strata Cassia



Strata Rye

### Care & Maintenance

Caring for your EuroCork floor is easy. Vacuum or sweep the floor to remove dirt and debris, and use a slightly damp (but not wet) mop for regular cleaning. For preventative care, entrance mats and rugs in high wear areas should be considered, together with felt protectors for furniture and appliance legs.



**Designer cork flooring**  
with a bold modern look

# Designer cork flooring with a bold modern look

EuroCork – an innovative designer cork plank range from Portugal



## Eco-friendly

A renewable resource, cork flooring is manufactured using the by-product of the cork oak tree. Cork floors are considered to be eco-friendly since the bark is stripped every nine to ten years without damage to the tree.

## Comfort

Warm to the touch and easy to maintain, EuroCork is quiet and comfortable underfoot.

## Stylish

The new EuroCork range comes in six bold designs to suit the most prestigious and fashionable architectural projects. Add charm and character to any environment.

## Durable

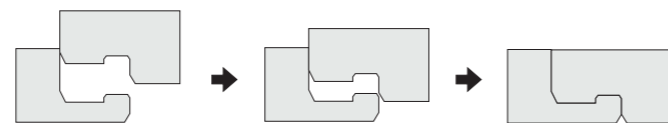
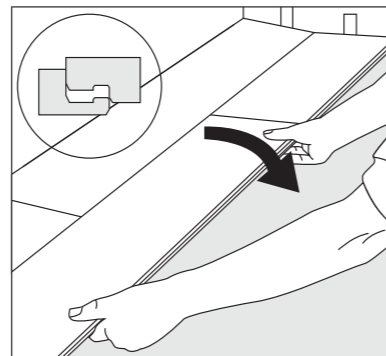
Cork floors are very durable due to their honeycomb cellular structure, allowing the cork to compress up to 40%, then return to its normal shape.

## Quick and Easy

Installation is quick and easy with the single action Lock&Fold system, reducing time and labour costs compared to other conventional mechanical locking systems.

## Versatile

Fashionable and appealing, EuroCork flooring suits both domestic and light commercial applications, and carries a 15 year residential structural warranty, and a five year commercial warranty.



### Technical Specifications:

- Board dimensions: 1220x140x10.5mm
- 8 boards per pack to cover 1.366 sq.m.
- Lock&Fold installation system

